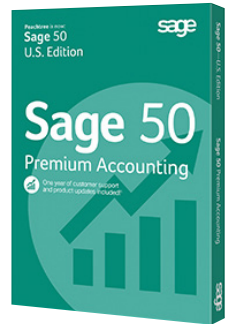


# Sage 50 Premium Accounting



## Achieve more every day with Sage 50 Premium Accounting



At Sage, we want to make it easier for you to reach your goals and achieve your ambitions. Sage 50 Premium Accounting 2015 helps you become more efficient and productive. With the time you save, you can focus on where your expanding business is going—and leave the everyday details to us.

- Know exactly where your business stands with a customized view of key business metrics such as account balances, quarterly revenue, outstanding receivables, or whatever is most important to you.
- Save money, become more profitable, and even increase customer satisfaction with tools that help you gain control over inventory, job costs, estimates, and invoicing.
- Make better, more timely decisions using the customizable reports in Sage 50 Intelligence Reporting and your real-time Sage 50 data.

### Here's what Sage 50 offers Accounting tools to get the job done

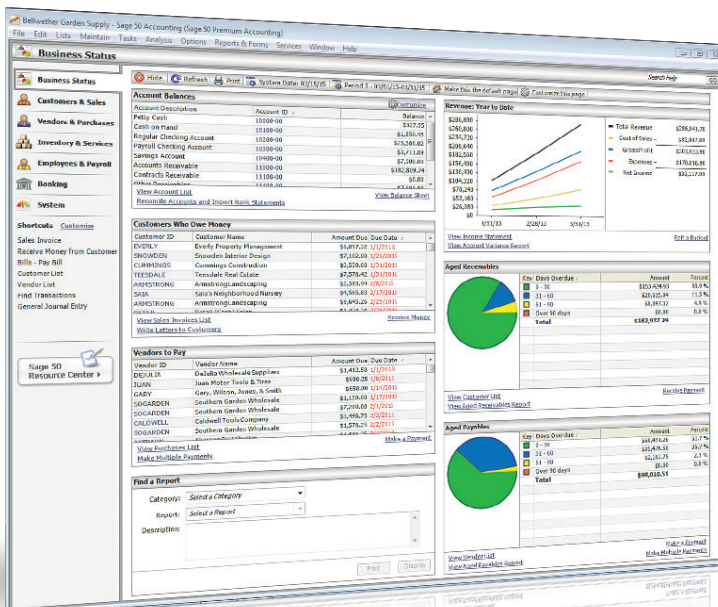
Sage 50 Premium Accounting is easy to use and comes with module-level security and automatic accounting checks that give you confidence in the integrity of your information. Plus, it's installed on computers that you control locally.


- Invoice customers by mail or email
- Monitor cash flow to meet current and upcoming payments
- Manage inventory using a variety of methods
- Control job revenue and expenses at the phase and cost code level
- Get module-level security and options for 1, 2, 3, 4, or 5 users

### We support your business like no one else

Your Sage 50 purchase comes fully supported and includes valuable tools and services that help you save time and money.<sup>1</sup>

- Harness the full capability of Sage 50 with help and advice by phone, chat, email, and even online.<sup>2</sup>
- Automatically receive updates and enhancements to Sage 50 as long as your annual plan or monthly subscription<sup>3</sup> is current.
- Make confident decisions with **Sage 50 Intelligence Reporting**, a custom reporting and analysis tool using the familiar interface of Microsoft® Excel® and real-time Sage 50 data.
- If you pay employees, you can easily add an integrated payroll solution. Calculate deductions, keep up with changing tax laws, prepare paychecks, deliver W-2 forms, and more!
- All of these benefits are part of your autorenewing **Sage Business Care** plan and are included as part of your product purchase!



 Quickly find all the information that's important to you from a central location. Customize and sort the data to suit your needs.

### Powerful inventory management

With Sage 50, you can quickly close a deal because you know what you have on hand. Or save money because you don't overorder. If inventory is part of your business, you can count on Sage 50 to have your back.

- Track inventory on user-defined attributes (color, size, style)
- Set different price levels or offer quantity discounts
- Automatically replenish inventory at user-defined levels
- Use serialized inventory to track warranty claims and recalls

### Greater insight for strategic planning

Get the vital information you need to stay in control and plan ahead. Sage 50 Intelligence Reporting lets you generate customized reports in the tool you already use—Microsoft Excel.

- Built-in templates for sales, purchasing, inventory, and financial reporting
- Consolidate information from multiple Sage 50 companies or other databases
- Reports are always up to date with the latest data—no export or manipulation required

### Get paid faster with credit card processing from Sage

See just how much better payment processing can be when you connect Sage 50 with Sage Payment Solutions.<sup>4</sup> Transactions automatically appear so there is no need for manual data entry, reducing the potential for errors. Plus, you can accept payments from anywhere, including a POS device, mobile phone, tablet, or any computer running Sage 50.

### As a Sage 50 customer, you receive these great benefits:

- No setup fees
- No minimum monthly fees
- No long-term contracts

Get started on your application today at [www.SagePayments.com/Sage50ApplyNow](http://www.SagePayments.com/Sage50ApplyNow) or call **800-742-3975**.

### Your business life—easier

Sage 50 Premium Accounting lets you easily manage everyday tasks like invoicing, inventory control, and sales, so you have time to focus on where your expanding business is heading. When you choose Sage 50 Premium Accounting, you will save time and money and achieve more every day.

For more information visit: [www.Sage50Accounting.com](http://www.Sage50Accounting.com) or contact:

<sup>1</sup> Valid credit card required to activate service. To ensure continuous service, your Sage Business Care plan is an automatically renewing plan, and subsequent years will be automatically billed to the same credit card each year on the anniversary date of your purchase at the then-current rate after notifying you 30 days in advance of your anniversary date. The credit card provided with this purchase will be used to automatically renew the plan if there is no other credit card number already established as your standard credit card number on file with Sage. You may terminate the plan with at least seven calendar days' notice prior to your renewal date and not be charged for the renewal.

<sup>2</sup> Customer support analysts are available from 9 a.m. until 8 p.m. ET Monday-Friday, and reserve the right to limit calls to one hour or one incident. Assistance is limited to Sage 50 solutions.

<sup>3</sup> Valid credit card and Internet access required. Payments will automatically be charged each month until your subscription is canceled. Cancellation requires a seven-day notice prior to your monthly payment date. You must be on the most current version of the software to continue your subscription. If you cancel your subscription or your monthly payment is not received, you will have read-only access to your data. Full program functionality will not be restored until you have brought your account current, including payment of a reactivation fee.

<sup>4</sup> Subject to approval and to Sage Payment Solutions terms and conditions. Additional fees, including swipe terminal for card present transactions, Internet access, and credit card required.